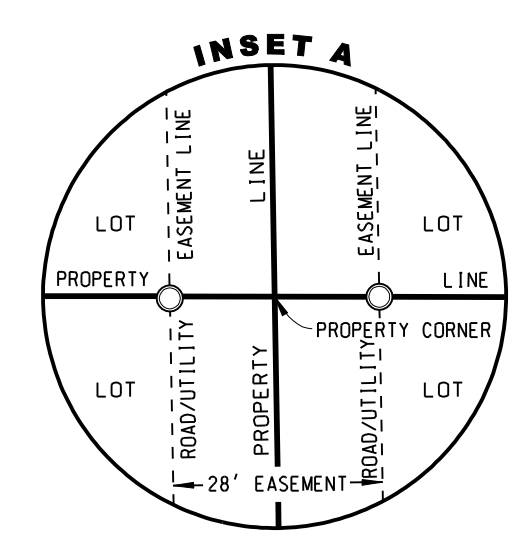
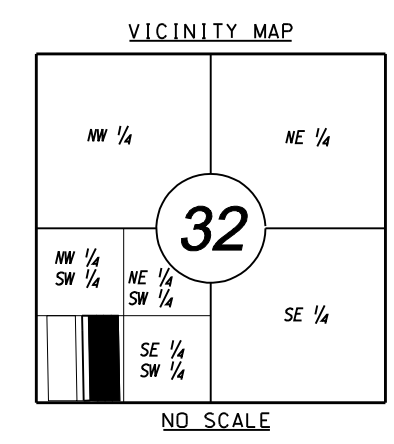
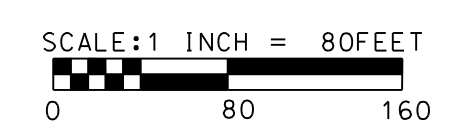


OVERALL LAYOUT OF LOTS 1 THROUGH 17, BLOCKS 5 - 8 SAND DOLLAR COVE 1st ADDITION, A SUBDIVISION OF A PORTION OF THE SW 1/4 SW 1/4, SECTION 32, TOWNSHIP 96 NORTH, RANGE 65 WEST OF THE 5th P.M., CHARLES MIX COUNTY, SOUTH DAKOTA



SAND DOLLAR COVE ADDITION LINE INFORMATION TABLE			SAND DOLLAR COVE 1st ADDITION LOT AREAS		
No.	Direction	Distance	Lot	Area (sq ft)	Area (acres)
L1	S 1°01'27" E	46.40	Block 5 Lot 1	5048	0.116
L2	S 1°01'27" E	44.14	Block 5 Lot 2	8920	0.205
L3	N 1°01'27" W	50.00	Block 5 Lot 3	8920	0.205
L4	S 1°01'27" W	50.00	Block 5 Lot 4	8920	0.205
L5	S 1°01'27" W	48.66	Block 5 Lot 5	8920	0.205
L6	S 1°01'27" W	50.00	Block 5 Lot 6	8920	0.205
L7	S 1°01'27" W	50.00	Block 5 Lot 7	12616	0.290
L8	N 1°01'27" W	50.00	Block 5 Lot 8	8920	0.205
L9	S 1°01'27" E	50.91	Block 5 Lot 9	8920	0.205
L10	S 1°01'27" E	50.00	Block 5 Lot 10	8920	0.205
L11	N 1°01'27" W	50.00	Block 5 Lot 11	8920	0.205
L12	S 1°01'27" E	53.17	Block 5 Lot 12	8920	0.205
L13	S 1°01'27" E	50.00	Block 5 Lot 13	8920	0.205
L14	S 1°01'27" E	50.00	Block 5 Lot 14	8794	0.202
L15	S 1°01'27" E	50.00	Block 5 Lot 15	5575	0.128
			Block 5 Lot 16	5575	0.128
			Block 5 Lot 17	7755	0.178
			Block 6 Lot 1	5300	0.122
			Block 6 Lot 2	8920	0.205
			Block 6 Lot 3	8920	0.205
			Block 6 Lot 4	8920	0.205
			Block 6 Lot 5	8920	0.205
			Block 6 Lot 6	8920	0.205
			Block 6 Lot 7	12616	0.290
			Block 6 Lot 8	8920	0.205
			Block 6 Lot 9	8920	0.205
			Block 6 Lot 10	8920	0.205
			Block 6 Lot 11	8920	0.205
			Block 6 Lot 12	8920	0.205
			Block 6 Lot 13	8920	0.205
			Block 6 Lot 14	8543	0.196
			Block 6 Lot 15	5575	0.128
			Block 6 Lot 16	5575	0.128
			Block 6 Lot 17	7783	0.179
			Block 7 Lot 1	8920	0.205
			Block 7 Lot 2	8920	0.205
			Block 7 Lot 3	8920	0.205
			Block 7 Lot 4	8920	0.205
			Block 7 Lot 5	8920	0.205
			Block 7 Lot 6	8920	0.205
			Block 7 Lot 7	12616	0.290
			Block 7 Lot 8	8920	0.205
			Block 7 Lot 9	8920	0.205
			Block 7 Lot 10	8920	0.205
			Block 7 Lot 11	8920	0.205
			Block 7 Lot 12	8920	0.205
			Block 7 Lot 13	8920	0.205
			Block 7 Lot 14	8920	0.205
			Block 7 Lot 15	5575	0.128
			Block 7 Lot 16	5575	0.128
			Block 7 Lot 17	7812	0.179
			Block 8 Lot 1	5803	0.133
			Block 8 Lot 2	8920	0.205
			Block 8 Lot 3	8920	0.205
			Block 8 Lot 4	8920	0.205
			Block 8 Lot 5	8920	0.205
			Block 8 Lot 6	8920	0.205
			Block 8 Lot 7	12616	0.290
			Block 8 Lot 8	8920	0.205
			Block 8 Lot 9	8920	0.205
			Block 8 Lot 10	8920	0.205
			Block 8 Lot 11	8920	0.205
			Block 8 Lot 12	8920	0.205
			Block 8 Lot 13	8920	0.205
			Block 8 Lot 14	8039	0.185
			Block 8 Lot 15	5575	0.128
			Block 8 Lot 16	5575	0.128
			Block 8 Lot 17	7840	0.180



- SURVEYOR'S NOTES:
- THE BASIS OF THIS SURVEY WAS ESTABLISHED FROM PINS FOUND ON THE SW SECTION CORNER, AND PINS ESTABLISHED FROM PRIOR SURVEY OF LOT A.
 - EAST WEST 40 LINE MATCHES UP FAIRLY GOOD WITH EXISTING FENCE OF NORTH PROPERTY LINE. LOCATION OF PROPERTY LINE IS APPROXIMATELY 1.8' NORTH OF EXISTING FENCE.
 - THERE ARE SEVERAL STRUCTURES BUILT ON LOT A THAT ARE OVER THE PLATTED PROPERTY LINE THAT ENCRDACH ON TO SAND DOLLAR COVE 1st ADDITION.
 - ON THE DRAWING OF THE PLAT NO SYMBOLS FOR THE IRON MONUMENT SET ARE SHOWN. PINS WERE PLACED AT THE CORNERS OF EACH LOT IN THE REAR. PINS WERE PLACED ON A 14.00' OFFSET FROM THE PROPERTY CORNER THAT IS IN THE STREET EASEMENT. SEE INSET "A" FOR LAYOUT OF PINS ON THE FRONT OF LOTS.
 - THIS SURVEY WAS PERFORMED WITHOUT THE BENEFIT OF A COMPLETE TITLE REPORT AND DOES NOT PURPORT TO SHOW EASEMENTS OF RECORD, IF ANY.
 - TOTAL ACREAGE OF BLOCKS 5-8 IS 574103 SF OR 13.180 ACRES

McLaur Engineering, Inc.
Elk Point, South Dakota

SAND DOLLAR COVE
LAYOUT OF BLOCKS 5 - 8

SCALE: 1"=80'	DATE: 9/23/4
DRAWN BY: JDL	APPROVED BY: KLM SHEET 1 OF 1