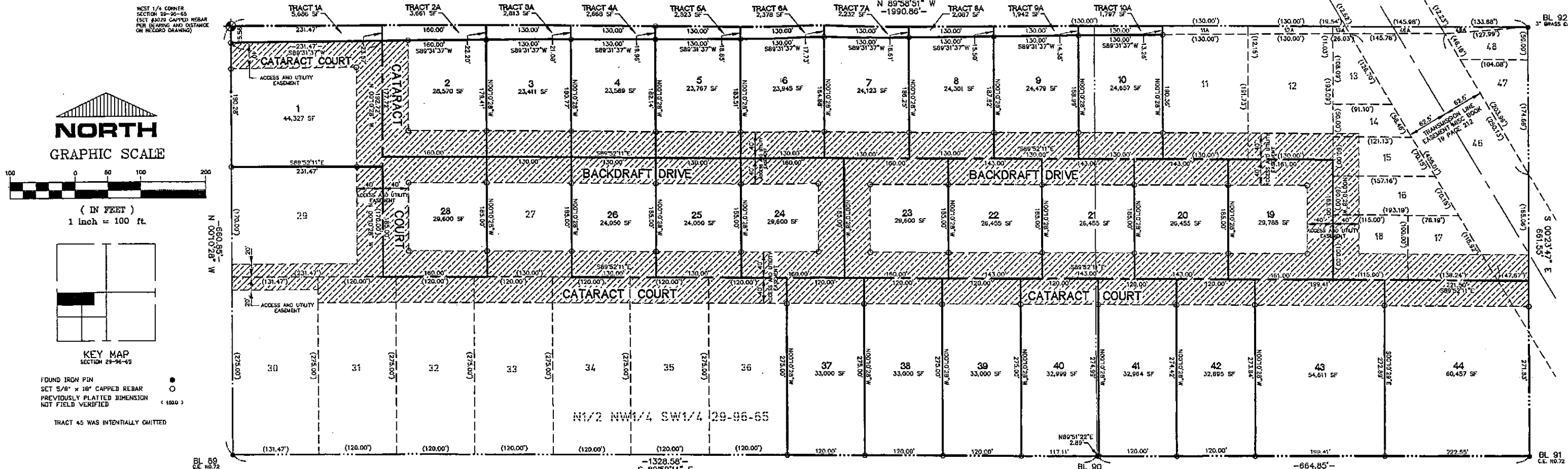


2250

HIGBEE CUT LLC ADDITION

IN THE N1/2 NW1/4 SW1/4 AND THE NW1/4 NE1/4 SW1/4 ALL IN SECTION 29, TOWNSHIP 96 NORTH, RANGE 65 WEST OF THE 5TH P.M., CHARLES MIX COUNTY, SOUTH DAKOTA.



SURVEYOR'S CERTIFICATE

I, DANIEL A. NORMAN, A REGISTERED LAND SURVEYOR UNDER THE LAWS OF THE STATE OF SOUTH DAKOTA DO HEREBY CERTIFY THAT ON OR BEFORE OCTOBER 5, 2005, I HAVE SURVEYED A PART OF THE N1/2 NW1/4 SW1/4 AND A PART OF THE NW1/4 NE1/4 SW1/4 ALL IN SECTION 29, TOWNSHIP 96 NORTH, RANGE 65 WEST OF THE 5TH PRINCIPAL MERIDIAN, CHARLES MIX COUNTY, SOUTH DAKOTA AND PLATTED THE SAME INTO TRACTS

1, 1A, 2, 2A, 3, 3A, 4, 4A, 5, 5A, 6, 6A, 7, 7A, 8, 8A, 9, 9A, 10, 10A, 19, 20, 21, 22, 23, 24, 25, 26, 28, 37, 38, 39, 40, 41, 42, 43, AND 44

WITH ACRES AND DIMENSIONS AS SHOWN ON THE ABOVE PLAT.

THE SAME SHALL HEREAFTER BE KNOWN AND DESCRIBED AS HIGBEE CUT LLC ADDITION IN THE N1/2 NW1/4 SW1/4 AND THE NW1/4 NE1/4 SW1/4 ALL IN SECTION 29, TOWNSHIP 96 NORTH, RANGE 65 WEST OF THE 5TH PRINCIPAL MERIDIAN, CHARLES MIX COUNTY, SOUTH DAKOTA.

I FURTHER CERTIFY THAT THE ABOVE PLAT CORRECTLY REPRESENTS THE SAME TO THE BEST OF MY KNOWLEDGE AND BELIEF AND THAT THIS SURVEY WAS PERFORMED AT THE REQUEST AND UNDER THE DIRECTION OF THE OWNERS FOR THE PURPOSE OF TRANSFER.

DATED 5TH DAY OF OCTOBER, 2005.

[Signature]
DANIEL A. NORMAN REG. NO. 3029



REGISTER OF DEEDS
FILED FOR RECORD THIS 8th DAY OF November 2005 IN BOOK 2250 OF PLATS ON PAGE 47

[Signature]
REGISTER OF DEEDS 200511099

OWNER'S CERTIFICATE

WE, THE UNDERSIGNED, DO HEREBY CERTIFY THAT WE ARE THE OWNERS OF ALL LAND INCLUDED IN THE ABOVE PLAT AND THAT SAID PLAT HAS BEEN MADE AT OUR REQUEST AND IN ACCORDANCE WITH OUR INSTRUCTIONS FOR THE PURPOSE OF TRANSFER, AND THAT THE DEVELOPMENT OF THIS LAND SHALL CONFORM TO ALL EXISTING APPLICABLE ZONING, SUBDIVISION AND EROSION AND SEDIMENT CONTROL REGULATIONS.

WE HEREBY DEDICATE TO THE PUBLIC FOR PUBLIC USE FOREVER, THE STREETS, ROADS, ALLEYS AND PARKS AND PUBLIC GROUNDS, IF ANY, AS SHOWN ON SAID PLAT, INCLUDING ALL SEWERS, CULVERTS, BRIDGES, WATER DISTRIBUTION LINES, SIDEWALKS AND OTHER IMPROVEMENTS ON OR UNDER THE STREETS, ROADS, ALLEYS, PARKS AND PUBLIC GROUNDS, WHETHER SUCH IMPROVEMENTS ARE SHOWN OR NOT. WE ALSO HEREBY GRANT EASEMENTS TO RUN WITH THE LAND FOR WATER, DRAINAGE, SEWER, GAS, ELECTRIC, TELEPHONE OR OTHER PUBLIC UTILITY LINES OR SERVICES UNDER, ON OR OVER THOSE STRIPS OF LAND DESIGNATED HEREON AS EASEMENTS.

WE FURTHER GRANT AND CERTIFY THAT THE ROADWAYS SHOWN AS CATARACT COURT AND BACKDRAFT DRIVE ARE PRIVATE ROADWAY EASEMENTS WHICH ARE HEREBY RESERVED AS A PERMANENT UNRESTRICTED ACCESS. SAID EASEMENT IS FOR VEHICULAR AND PEDESTRIAN TRAVEL OVER SAID ROADWAY FOR THE PURPOSE OF ACCESS TO ADJUTING PROPERTY. IT IS UNDERSTOOD THAT THE OWNER, THEIR LESSEES AND ASSIGNEES HAVE THE RESPONSIBILITY WITH RESPECT TO MAINTAINING SAID PRIVATE ROAD. SAID GRANT IS TO RUN WITH THE LAND, AS NO DEDICATION TO THE PUBLIC IS BEING MADE OF SAID PRIVATE ROAD, THE OWNERS, THEIR LESSEES AND ASSIGNEES SHALL AT THEIR OWN COST AND EXPENSE THROUGH A ROAD MAINTENANCE AGREEMENT KEEP AND PRESERVE SAID PRIVATE ROAD AT ALL TIMES IN A GOOD CONDITION OF REPAIR AND MAINTENANCE AND CLEAR OF SNOW AND OTHER OBSTRUCTIONS AND NEITHER ERECT NOR PERMIT ERECTION OF ANY IMPROVEMENTS OF ANY KIND WITHIN SAID PRIVATE ROAD WHICH MIGHT INTERFERE IN ANY WAY WITH THE PROPERTY MAINTENANCE, USE, REPAIR, RECONSTRUCTION AND PATROLLING OF SAID PRIVATE ROAD.

DATED THIS 12 DAY OF October, 2005.

[Signature]
Amy L. Hanson
My Commission Expires 11-18-09

STATE OF SOUTH DAKOTA
COUNTY OF MINNEHAHA

ON THIS 12 DAY OF October, 2005, BEFORE ME, THE UNDERSIGNED NOTARY PUBLIC IN AND FOR SAID COUNTY AND STATE PERSONALLY APPEARED

[Signature]
Scott Gacke
WHO ACKNOWLEDGED HIMSELF TO BE THE AUTHORIZED REPRESENTATIVE OF HIGBEE CUT LLC, A SOUTH DAKOTA LIMITED LIABILITY COMPANY AND BEING THE AUTHORIZED REPRESENTATIVE EXECUTED THE FOREGOING INSTRUMENT FOR THE PURPOSE THEREIN CONTAINED.

IN WITNESS WHEREOF, I HAVE SET MY HAND AND OFFICIAL SEAL.

[Signature]
NOTARY PUBLIC, STATE OF SOUTH DAKOTA
MY COMMISSION EXPIRES:

COUNTY COMMISSIONER'S RESOLUTION

BE IT RESOLVED BY THE BOARD OF COUNTY COMMISSIONERS OF CHARLES MIX COUNTY, SOUTH DAKOTA THAT THE PLAT OF HIGBEE CUT LLC ADDITION IN THE N1/2 NW1/4 SW1/4 AND THE NW1/4 NE1/4 SW1/4 ALL IN SECTION 29, TOWNSHIP 96 NORTH, RANGE 65 WEST OF THE 5TH PRINCIPAL MERIDIAN, CHARLES MIX COUNTY, SOUTH DAKOTA, BE APPROVED AND THE COUNTY AUDITOR OF CLAY COUNTY, SOUTH DAKOTA IS HEREBY DIRECTED TO ENDORSE ON SUCH PLAT A COPY OF THE RESOLUTION AND CERTIFY THE SAME THEREON.

DATED THIS 11 DAY OF Dec, 2005.

[Signature]
CHAIRMAN BOARD OF COUNTY COMMISSIONERS

COUNTY AUDITOR

I, THE UNDERSIGNED, COUNTY AUDITOR FOR CHARLES MIX COUNTY, SOUTH DAKOTA, DO HEREBY CERTIFY THAT THE FOREGOING RESOLUTION WAS PASSED BY THE BOARD OF COUNTY COMMISSIONERS OF CHARLES MIX COUNTY, SOUTH DAKOTA AT THE REGULAR MEETING ON THE 12 DAY OF October, 2005.

[Signature]
COUNTY AUDITOR

TREASURER'S CERTIFICATE

I, THE UNDERSIGNED, COUNTY TREASURER FOR CHARLES MIX COUNTY, SOUTH DAKOTA, DO HEREBY CERTIFY THAT ALL TAXES WHICH ARE LIENS UPON ANY LAND INCLUDED IN THE ABOVE AND FOREGOING PLAT AS SHOWN BY THE RECORDS OF MY OFFICE HAVE BEEN PAID IN FULL.

DATED THIS 28th DAY OF Oct, 2005.

[Signature]
COUNTY TREASURER

DIRECTOR OF EQUALIZATION

I, THE UNDERSIGNED, COUNTY DIRECTOR OF EQUALIZATION FOR CHARLES MIX COUNTY, SOUTH DAKOTA, DO HEREBY CERTIFY THAT A COPY OF THE ABOVE PLAT HAS BEEN FILED AT MY OFFICE.

DATED THIS 28th DAY OF October, 2005.

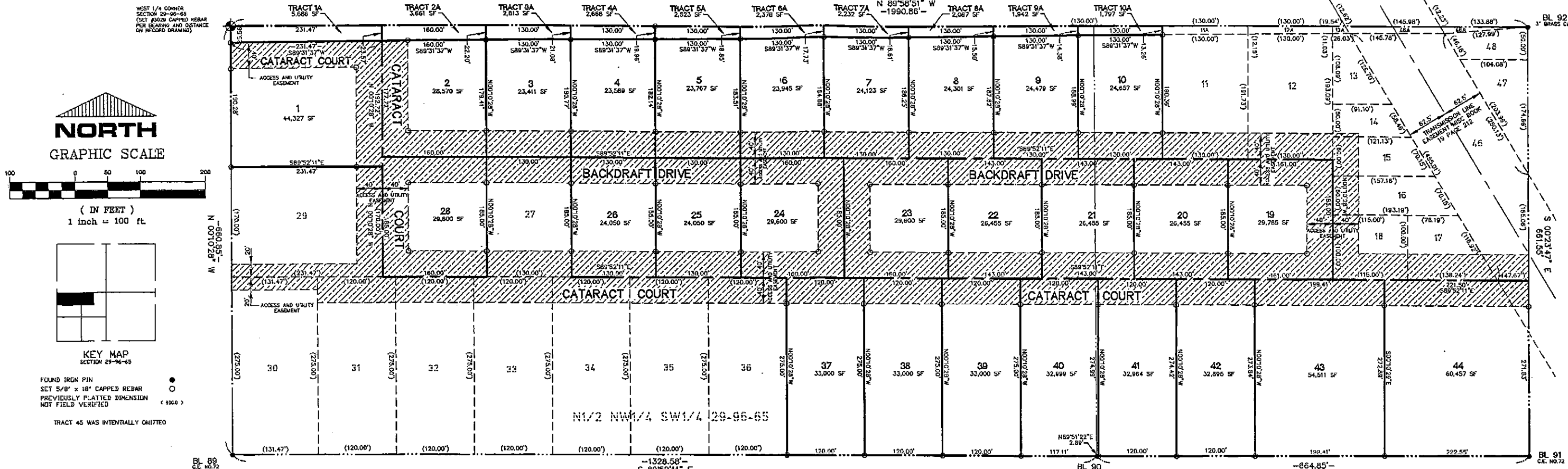
[Signature]
DIRECTOR OF EQUALIZATION

PREPARED BY:
DANIEL A. NORMAN
2317 WOODBINE LANE
SIDOU FALLS, SOUTH DAKOTA
PHONE: 605-236-0078 97809-4304

2257

HIGBEE CUT LLC ADDITION

IN THE N1/2 NW1/4 SW1/4 AND THE NW1/4 NE1/4 SW1/4 ALL IN SECTION 29, TOWNSHIP 96 NORTH, RANGE 65 WEST OF THE 5TH P.M., CHARLES MIX COUNTY, SOUTH DAKOTA.



SURVEYOR'S CERTIFICATE

I, DANIEL A. NORMAN, A REGISTERED LAND SURVEYOR UNDER THE LAWS OF THE STATE OF SOUTH DAKOTA DO HEREBY CERTIFY THAT ON OR BEFORE OCTOBER 5, 2005, I HAVE SURVEYED A PART OF THE N1/2 NW1/4 SW1/4 AND A PART OF THE NW1/4 NE1/4 SW1/4 ALL IN SECTION 29, TOWNSHIP 96 NORTH, RANGE 65 WEST OF THE 5TH PRINCIPAL MERIDIAN, CHARLES MIX COUNTY, SOUTH DAKOTA AND PLATTED THE SAME INTO TRACTS

1, 1A, 2, 2A, 3, 3A, 4, 4A, 5, 5A, 6, 6A, 7, 7A, 8, 8A, 9, 9A, 10, 10A, 19, 20, 21, 22, 23, 24, 25, 26, 28, 29, 30, 31, 32, 33, 34, 35, 36, 37, 38, 39, 40, 41, 42, 43, AND 44

WITH ACRES AND DIMENSIONS AS SHOWN ON THE ABOVE PLAT.

THE SAME SHALL HEREAFTER BE KNOWN AND DESCRIBED AS HIGBEE CUT LLC ADDITION IN THE N1/2 NW1/4 SW1/4 AND THE NW1/4 NE1/4 SW1/4 ALL IN SECTION 29, TOWNSHIP 96 NORTH, RANGE 65 WEST OF THE 5TH PRINCIPAL MERIDIAN, CHARLES MIX COUNTY, SOUTH DAKOTA.

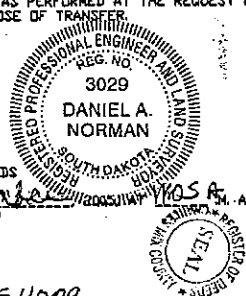
I FURTHER CERTIFY THAT THE ABOVE PLAT CORRECTLY REPRESENTS THE SAME TO THE BEST OF MY KNOWLEDGE AND BELIEF AND THAT THIS SURVEY WAS PERFORMED AT THE REQUEST AND UNDER THE DIRECTION OF THE OWNERS FOR THE PURPOSE OF TRANSFER.

DATED 5TH DAY OF OCTOBER, 2005.

[Signature]
DANIEL A. NORMAN
REG. NO. 3029

REGISTER OF DEEDS
FILED FOR RECORD THIS 8th DAY OF November 2005
RECORDED IN BOOK 2350 OF PLATS ON PAGE 47

[Signature]
Monica Walden
REGISTER OF DEEDS
200511099



OWNER'S CERTIFICATE

WE, THE UNDERSIGNED, DO HEREBY CERTIFY THAT WE ARE THE OWNERS OF ALL LAND INCLUDED IN THE ABOVE PLAT AND THAT SAID PLAT HAS BEEN MADE AT OUR REQUEST AND IN ACCORDANCE WITH OUR INSTRUCTIONS FOR THE PURPOSE OF TRANSFER, AND THAT THE DEVELOPMENT OF THIS LAND SHALL CONFORM TO ALL EXISTING APPLICABLE ZONING, SUBDIVISION AND EROSION AND SEDIMENT CONTROL REGULATIONS.

WE HEREBY DEDICATE TO THE PUBLIC FOR PUBLIC USE FOREVER, THE STREETS, ROADS, ALLEYS AND PARKS AND PUBLIC GROUNDS, IF ANY, AS SHOWN ON SAID PLAT, INCLUDING ALL SEWERS, CULVERTS, BRIDGES, WATER DISTRIBUTION LINES, SIDEWALKS AND OTHER IMPROVEMENTS ON OR UNDER THE STREETS, ROADS, ALLEYS, PARKS AND PUBLIC GROUNDS, WHETHER SUCH IMPROVEMENTS ARE SHOWN OR NOT. WE ALSO HEREBY GRANT EASEMENTS TO RUN WITH THE LAND FOR WATER, DRAINAGE, SEWER, GAS, ELECTRIC, TELEPHONE OR OTHER PUBLIC UTILITY LINES OR SERVICES UNDER, ON OR OVER THOSE STRIPS OF LAND DESIGNATED HEREON AS EASEMENTS.

WE FURTHER GRANT AND CERTIFY THAT THE ROADWAYS SHOWN AS CATARACT COURT AND BACKDRAFT DRIVE ARE PRIVATE ROADWAY EASEMENTS WHICH ARE HEREBY RESERVED AS A PERMANENT UNTRACED ACCESS, SAID EASEMENT IS FOR VEHICULAR AND PEDESTRIAN TRAVEL OVER SAID ROADWAY FOR THE PURPOSE OF ACCESS TO ADJUTING PROPERTY. IT IS UNDERSTOOD THAT THE OWNER, THEIR LESSEES AND ASSIGNEES HAVE THE RESPONSIBILITY WITH RESPECT TO MAINTAINING SAID PRIVATE ROAD. SAID GRANT IS TO RUN WITH THE LAND, AS NO DEDICATION TO THE PUBLIC IS BEING MADE OF SAID PRIVATE ROAD, THE OWNERS, THEIR LESSEES AND ASSIGNEES SHALL AT THEIR OWN COST AND EXPENSE THROUGH A ROAD MAINTENANCE AGREEMENT KEEP AND PRESERVE SAID PRIVATE ROAD AT ALL TIMES IN A GOOD CONDITION OF REPAIR AND MAINTENANCE AND CLEAR OF SNOW AND OTHER OBSTRUCTIONS AND NEITHER ERECT NOR PERMIT ERECTION OF ANY IMPROVEMENTS OF ANY KIND WITHIN SAID PRIVATE ROAD WHICH MIGHT INTERFERE IN ANY WAY WITH THE PROPERTY MAINTENANCE, USE, REPAIR, RECONSTRUCTION AND PATROLLING OF SAID PRIVATE ROAD.

DATED THIS 12th DAY OF October, 2005.

[Signature]
Amy L. Hansen
My Commission Expires 11-19-09

STATE OF SOUTH DAKOTA
COUNTY OF MINNEHAHA

ON THIS 17th DAY OF October, 2005, BEFORE ME, THE UNDERSIGNED NOTARY PUBLIC IN AND FOR SAID COUNTY AND STATE PERSONALLY APPEARED

[Signature]
Scott Gacke

WHO ACKNOWLEDGED HIMSELF TO BE THE AUTHORIZED REPRESENTATIVE OF HIGBEE CUT LLC, A SOUTH DAKOTA LIMITED LIABILITY COMPANY AND BEING THE AUTHORIZED REPRESENTATIVE EXECUTED THE FOREGOING INSTRUMENT FOR THE PURPOSE THEREIN CONTAINED.

IN WITNESS WHEREOF, I HAVE SET MY HAND AND OFFICIAL SEAL.

[Signature]
Amy L. Hansen
NOTARY PUBLIC, STATE OF SOUTH DAKOTA
MY COMMISSION EXPIRES:

COUNTY COMMISSIONER'S RESOLUTION

BE IT RESOLVED BY THE BOARD OF COUNTY COMMISSIONERS OF CHARLES MIX COUNTY, SOUTH DAKOTA THAT THE PLAT OF HIGBEE CUT LLC ADDITION IN THE N1/2 NW1/4 SW1/4 AND THE NW1/4 NE1/4 SW1/4 ALL IN SECTION 29, TOWNSHIP 96 NORTH, RANGE 65 WEST OF THE 5TH PRINCIPAL MERIDIAN, CHARLES MIX COUNTY, SOUTH DAKOTA, BE APPROVED AND THE COUNTY AUDITOR OF CLAY COUNTY, SOUTH DAKOTA IS HEREBY DIRECTED TO ENDORSE ON SUCH PLAT A COPY OF THE RESOLUTION AND CERTIFY THE SAME THEREON.

DATED THIS 21st DAY OF Dec, 2005.

[Signature]
C. Red Allen
CHAIRMAN BOARD OF COUNTY COMMISSIONERS

COUNTY AUDITOR

I, THE UNDERSIGNED, COUNTY AUDITOR FOR CHARLES MIX COUNTY, SOUTH DAKOTA, DO HEREBY CERTIFY THAT THE FOREGOING RESOLUTION WAS PASSED BY THE BOARD OF COUNTY COMMISSIONERS OF CHARLES MIX COUNTY, SOUTH DAKOTA AT THE REGULAR MEETING ON THE 15th DAY OF October, 2005.

[Signature]
County Auditor

TREASURER'S CERTIFICATE

I, THE UNDERSIGNED, COUNTY TREASURER FOR CHARLES MIX COUNTY, SOUTH DAKOTA, DO HEREBY CERTIFY THAT ALL TAXES WHICH ARE LIENS UPON ANY LAND INCLUDED IN THE ABOVE AND FOREGOING PLAT AS SHOWN BY THE RECORDS OF MY OFFICE HAVE BEEN PAID IN FULL.

DATED THIS 28th DAY OF Oct, 2005.

[Signature]
County Treasurer

DIRECTOR OF EQUALIZATION

I, THE UNDERSIGNED, COUNTY DIRECTOR OF EQUALIZATION FOR CHARLES MIX COUNTY, SOUTH DAKOTA, DO HEREBY CERTIFY THAT A COPY OF THE ABOVE PLAT HAS BEEN FILED AT MY OFFICE.

DATED THIS 28th DAY OF October, 2005.

[Signature]
Director of Equalization

PREPARED BY:
DANIEL A. NORMAN
2317 WOODBINE LANE
SIOUX FALLS, SOUTH DAKOTA
PHONE 605-336-0178